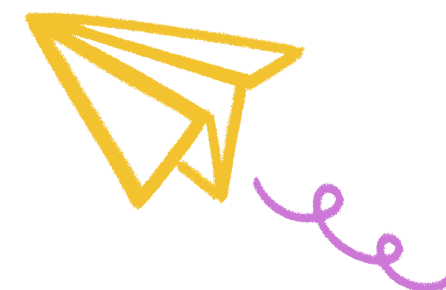


WELCOME TO LITTLE LIFE ACADEMY



BUILDING A CHRISTIAN FOUNDATION FOR  
A LIFETIME OF LEARNING

# WHAT IS PRESCHOOL?



Preschool is an early childhood educational program for children aged 2 to 5 years old. It provides a structured environment that fosters cognitive, social, emotional, and physical development through play-based and teacher-guided activities.





# IMPORTANCE OF EARLY CHILDHOOD EDUCATION

Preschool lays the groundwork for future academic success. Studies show that children who attend quality preschools demonstrate improved language skills, higher math abilities, better self-regulation, and stronger social skills in later schooling.





# CORE LEARNING AREAS

Preschool curriculum  
typically includes:

## LANGUAGE AND LITERACY

Storytime, vocabulary,  
early writing.  
Making Great Readers  
Curriculum

## ART AND CREATIVITY

Drawing, music, crafts

## MATHEMATICS

Counting, sorting,  
shape recognition

## SCIENCE & NATURE

Exploring weather,  
plants, animals

## CHRIST CENTERED

Abeka Curriculum  
Daily bible stories  
Weekly chapel

## SOCIAL- EMOTIONAL DEVELOPMENT:

Sharing, empathy,  
self-control





# DAILY ACTIVITIES IN PRESCHOOL

A day in preschool often includes:

- Morning circle time
- Themed learning stations
- Outdoor play
- Snack and lunch time
- Storytelling and quiet time
- Music & movement sessions





# ROLE OF PLAY IN LEARNING



Play is essential in preschool as it encourages imagination, collaboration, and problem-solving. Structured and unstructured play helps children develop motor skills, language, and emotional intelligence.

1 2 3





# TEACHER'S ROLE IN PRESCHOOL

Preschool teachers serve as facilitators of learning. They guide activities, observe development, encourage positive behavior, and communicate regularly with parents to support each child's growth.



**3 John 1:4 "I have no greater joy than to hear that my children are walking in the truth"**



Psalm 127:3 “Behold, children are a heritage from the Lord”

# FAMILY INVOLVEMENT



Family participation enhances the preschool experience. Parents are encouraged to:

- Attend school events
- Read at home with their child
- Support learning through daily routines
- Maintain communication with teachers





Matthew 19:14 Jesus said, "Let the little children come to me, and do not hinder them, for the kingdom of heaven belongs to such as these."

# WHY CHOOSE OUR PRESCHOOL?

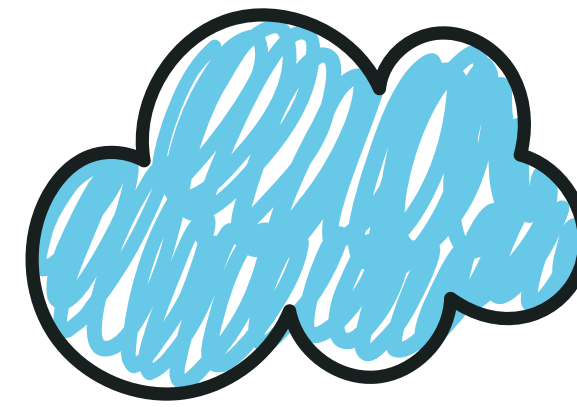
Consider these factors:

- Excellence in education with a Christian foundation
- State Licensed Preschool
- Safe and engaging learning environment
- Low student-to-teacher ratio
- Age-appropriate curriculum
- Positive reviews and recommendations





# CONCLUSION



Preschool is more than just childcare—it's a critical step in a child's educational journey. By fostering curiosity, confidence, and social skills, preschool equips young learners with the tools they need to thrive in school and beyond.



**Proverbs 22:6: Train up a child in the way he should go. And when he is old he will not depart from it.**



20010 Chartown Dr. Cornelius,  
NC 28031



[www.littlelifeacademy.org](http://www.littlelifeacademy.org)



[sjones@lifecharlotte.com](mailto:sjones@lifecharlotte.com)  
[khobbs@lifecharlotte.com](mailto:khobbs@lifecharlotte.com)